

Resumo Aço Fundação	Comp. total (m)	Peso+10% (kg)	Total
Detalhamento fundação			
CA-50 Ø8	84.6	37	
Ø10	3005.5	2037	
Ø12.5	339.5	360	2434
CA-60 Ø5	106.9	18	18
Total			2452

Cota de arranque dos pilares: -0.40 m

NÍVEL DO BLOCO

NÍVEL DA ESTACA ANTES DO ARMAMENTO

TRILHA A SER REALIZADA COM PRETENSÃO DA ARMADURA

ARMADURA DA ESTACA

NÍVEL DE ASSALMO DAS ESTACAS

LAJOTA DE CONCRETO IN REGULAÇÃO

ESTACA

NÍVEL DO FURO DO BLOCO

53x

(estribo)

8 N1 Ø 8 C#600  
(barras longitudinais)

30

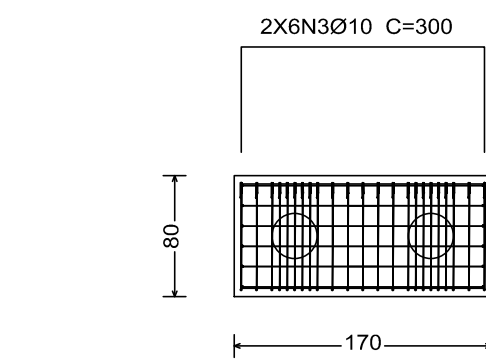
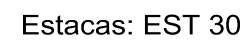
50 N2 Ø 5 C12 C#100

Obs.: O construtor deverá garantir a capacidade mínima de 16 toneladas por estaca.

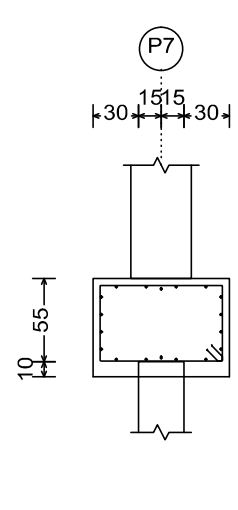
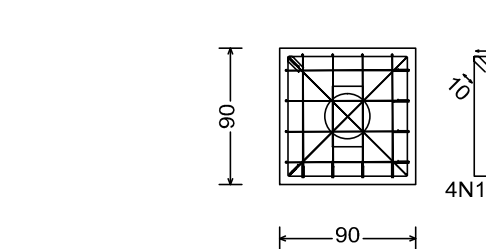
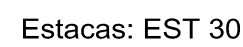
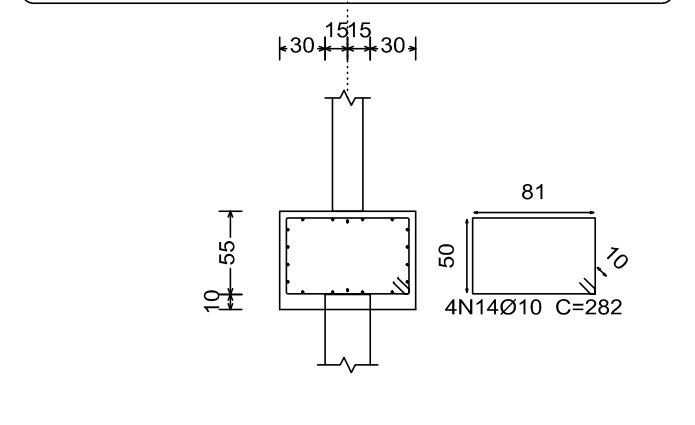
- a.1) Resistência característica do concreto  
PARA ESTACAS:  $f_{ck} \geq 200 \text{ kg/cm}^2$  (20 MPa);
- a.2) Cimento do tipo CP II-32, CP II-40 ou CP V-ARI;
- a.3) Fator água/cimento  $\leq 0,55$ ;
- a.4) Consumo mínimo de cimento  $\geq 400 \text{ kg/m}^3$
- a.5) Cobrimento Nominal Mínimo das armaduras em

d) O Construtor deverá obedecer as NORMAS vigentes pertinentes à execução: (Cura, escoramentos, recobrimentos, apoios, traspasse de emendas da armadura, raios dos pinos para dobras e ganchos, fator água/cimento, etc.).

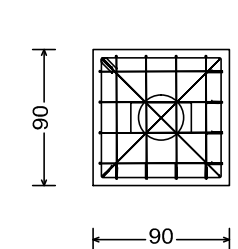
RESUMO AÇO CA 50-60			
AÇO	BIT (mm)	COMPR (m)	PESO (kg)
60B	5	2650	409
50A	8	2544	1005
Peso Total	60B =		409 kg
Peso Total	50A =		1005 kg



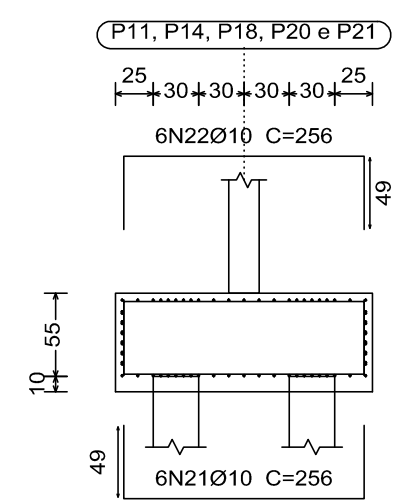
(P9, P10, P12, P13, P15, P16, P17, P19, P23, P24, P31 e P33)



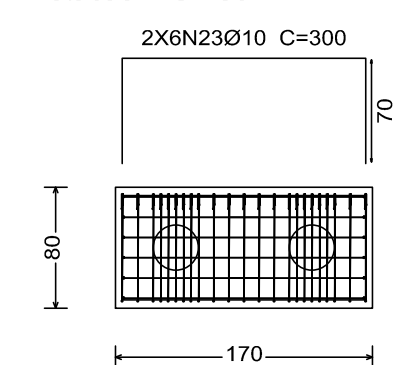
Estacas: EST 30



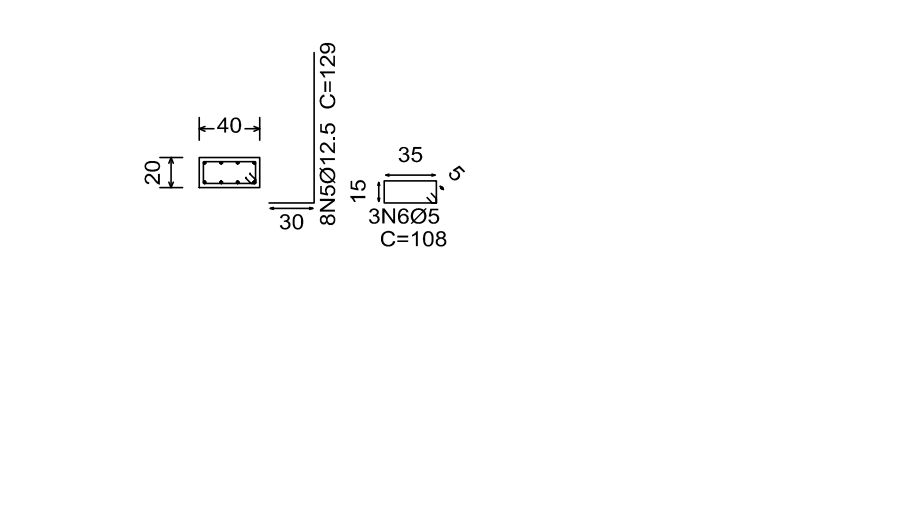
P11, P14, P18, P20 e P21



Estacas: EST 30



P1, P2, P3, P4, P5, P6, P8, P25, P26, P27, P28, P29, P30 e P32



NOTAS GERAIS:

1. MEDIDAS EM CENTÍMETROS, CONCORDAR COM O PROJETO ARQUITETÔNICO.
2. PROJETO ESTRUTURAL DE ACÓRDO COM A NBR-10164 "PROJETO E EXECUÇÃO DE OBRAS DE CONCRETO".
3. TODA ANÁLISE DEVE SER LIMPADA COM ATÉ 4% DE ÁGUA ANTES DA CONCRETAGEM.
4. AS ARMADURAS DEVERÃO SER ENCRUSTADAS EM 4 CM DE CONCRETO E DEVE-SE EVITAR A FALHA DE ENCRUSTAMENTO DAS ARMADURAS.
5. DEVERÃO SER OBRIGADOS AS NORMAS E RECOMENDAÇÕES DOS ÓRGÃOS DE FISCALIZAÇÃO DO MEIO AMBIENTE E ORIENTAÇÃO DA FISCALIZAÇÃO DA OBRA.
6. QUALQUER ALTERAÇÃO NO PROJETO SÓ PODERÁ SER EXECUTADA APÓS VERIFICAÇÃO E APROVAÇÃO DO PROJETO.
7. NENHUMA CONCRETAGEM PODERÁ SER REALIZADA SEM A PRESENÇA DO ENGENHEIRO RESPONSÁVEL PELA OBRA.
8. AS FORMAS DEVERÃO SER PROJECCIONADAS, TRATAMENTO E CONCRETAMENTO DE ACÓRDO COM A NBR-12220 PARA REFORÇO E TRATAMENTO DE CONCRETOS, MANUTENÇÃO CONTRA FLECHAS, AJUSTAMENTOS E INJELENTOS DE PROJETO.
9. SECUR AS ORIENTAÇÕES DE SEGURANÇA QUANTO A ESTABILIDADE DAS ESCAVACOES.
10. OBRIGATORIO FISCALIZAÇÃO E CUMPRIMENTO DAS NORMAS DE SEGURANÇA E SAÚDE OCUPACIONAL (NR-12, NR-18, NR-20, NR-23, NR-24, NR-26, NR-28, NR-33, NR-35, NR-36, NR-37, NR-38, NR-39, NR-40, NR-41, NR-42, NR-43, NR-44, NR-45, NR-46, NR-47, NR-48, NR-49, NR-50, NR-51, NR-52, NR-53, NR-54, NR-55, NR-56, NR-57, NR-58, NR-59, NR-60, NR-61, NR-62, NR-63, NR-64, NR-65, NR-66, NR-67, NR-68, NR-69, NR-70, NR-71, NR-72, NR-73, NR-74, NR-75, NR-76, NR-77, NR-78, NR-79, NR-80, NR-81, NR-82, NR-83, NR-84, NR-85, NR-86, NR-87, NR-88, NR-89, NR-90, NR-91, NR-92, NR-93, NR-94, NR-95, NR-96, NR-97, NR-98, NR-99, NR-100, NR-101, NR-102, NR-103, NR-104, NR-105, NR-106, NR-107, NR-108, NR-109, NR-110, NR-111, NR-112, NR-113, NR-114, NR-115, NR-116, NR-117, NR-118, NR-119, NR-120, NR-121, NR-122, NR-123, NR-124, NR-125, NR-126, NR-127, NR-128, NR-129, NR-130, NR-131, NR-132, NR-133, NR-134, NR-135, NR-136, NR-137, NR-138, NR-139, NR-140, NR-141, NR-142, NR-143, NR-144, NR-145, NR-146, NR-147, NR-148, NR-149, NR-150, NR-151, NR-152, NR-153, NR-154, NR-155, NR-156, NR-157, NR-158, NR-159, NR-160, NR-161, NR-162, NR-163, NR-164, NR-165, NR-166, NR-167, NR-168, NR-169, NR-170, NR-171, NR-172, NR-173, NR-174, NR-175, NR-176, NR-177, NR-178, NR-179, NR-180, NR-181, NR-182, NR-183, NR-184, NR-185, NR-186, NR-187, NR-188, NR-189, NR-190, NR-191, NR-192, NR-193, NR-194, NR-195, NR-196, NR-197, NR-198, NR-199, NR-200, NR-201, NR-202, NR-203, NR-204, NR-205, NR-206, NR-207, NR-208, NR-209, NR-210, NR-211, NR-212, NR-213, NR-214, NR-215, NR-216, NR-217, NR-218, NR-219, NR-220, NR-221, NR-222, NR-223, NR-224, NR-225, NR-226, NR-227, NR-228, NR-229, NR-230, NR-231, NR-232, NR-233, NR-234, NR-235, NR-236, NR-237, NR-238, NR-239, NR-240, NR-241, NR-242, NR-243, NR-244, NR-245, NR-246, NR-247, NR-248, NR-249, NR-250, NR-251, NR-252, NR-253, NR-254, NR-255, NR-256, NR-257, NR-258, NR-259, NR-260, NR-261, NR-262, NR-263, NR-264, NR-265, NR-266, NR-267, NR-268, NR-269, NR-270, NR-271, NR-272, NR-273, NR-274, NR-275, NR-276, NR-277, NR-278, NR-279, NR-280, NR-281, NR-282, NR-283, NR-284, NR-285, NR-286, NR-287, NR-288, NR-289, NR-290, NR-291, NR-292, NR-293, NR-294, NR-295, NR-296, NR-297, NR-298, NR-299, NR-300, NR-301, NR-302, NR-303, NR-304, NR-305, NR-306, NR-307, NR-308, NR-309, NR-310, NR-311, NR-312, NR-313, NR-314, NR-315, NR-316, NR-317, NR-318, NR-319, NR-320, NR-321, NR-322, NR-323, NR-324, NR-325, NR-326, NR-327, NR-328, NR-329, NR-330, NR-331, NR-332, NR-333, NR-334, NR-335, NR-336, NR-337, NR-338, NR-339, NR-340, NR-341, NR-342, NR-343, NR-344, NR-345, NR-346, NR-347, NR-348, NR-349, NR-350, NR-351, NR-352, NR-353, NR-354, NR-355, NR-356, NR-357, NR-358, NR-359, NR-360, NR-361, NR-362, NR-363, NR-364, NR-365, NR-366, NR-367, NR-368, NR-369, NR-370, NR-371, NR-372, NR-373, NR-374, NR-375, NR-376, NR-377, NR-378, NR-379, NR-380, NR-381, NR-382, NR-383, NR-384, NR-385, NR-386, NR-387, NR-388, NR-389, NR-390, NR-391, NR-392, NR-393, NR-394, NR-395, NR-396, NR-397, NR-398, NR-399, NR-400, NR-401, NR-402, NR-403, NR-404, NR-405, NR-406, NR-407, NR-408, NR-409, NR-410, NR-411, NR-412, NR-413, NR-414, NR-415, NR-416, NR-417, NR-418, NR-419, NR-420, NR-421, NR-422, NR-423, NR-424, NR-425, NR-426, NR-427, NR-428, NR-429, NR-430, NR-431, NR-432, NR-433, NR-434, NR-435, NR-436, NR-437, NR-438, NR-439, NR-440, NR-441, NR-442, NR-443, NR-444, NR-445, NR-446, NR-447, NR-448, NR-449, NR-450, NR-451, NR-452, NR-453, NR-454, NR-455, NR-456, NR-457, NR-458, NR-459, NR-460, NR-461, NR-462, NR-463, NR-464, NR-465, NR-466, NR-467, NR-468, NR-469, NR-470, NR-471, NR-472, NR-473, NR-474, NR-475, NR-476, NR-477, NR-478, NR-479, NR-480, NR-481, NR-482, NR-483, NR-484, NR-485, NR-486, NR-487, NR-488, NR-489, NR-490, NR-491, NR-492, NR-493, NR-494, NR-495, NR-496, NR-497, NR-498, NR-499, NR-500, NR-501, NR-502, NR-503, NR-504, NR-505, NR-506, NR-507, NR-508, NR-509, NR-510, NR-511, NR-512, NR-513, NR-514, NR-515, NR-516, NR-517, NR-518, NR-519, NR-520, NR-521, NR-522, NR-523, NR-524, NR-525, NR-526, NR-527, NR-528, NR-529, NR-530, NR-531, NR-532, NR-533, NR-534, NR-535, NR-536, NR-537, NR-538, NR-539, NR-540, NR-541, NR-542, NR-543, NR-544, NR-545, NR-546, NR-547, NR-548, NR-549, NR-550, NR-551, NR-552, NR-553, NR-554, NR-555, NR-556, NR-557, NR-558, NR-559, NR-560, NR-561, NR-562, NR-563, NR-564, NR-565, NR-566, NR-567, NR-568, NR-569, NR-570, NR-571, NR-572, NR-573, NR-574, NR-575, NR-576, NR-577, NR-578, NR-579, NR-580, NR-581, NR-582, NR-583, NR-584, NR-585, NR-586, NR-587, NR-588, NR-589, NR-590, NR-591, NR-592, NR-593, NR-594, NR-595, NR-596, NR-597, NR-598, NR-599, NR-600, NR-601, NR-602, NR-603, NR-604, NR-605, NR-606, NR-607, NR-608, NR-609, NR-610, NR-611, NR-612, NR-613, NR-614, NR-615, NR-616, NR-617, NR-618, NR-619, NR-620, NR-621, NR-622, NR-623, NR-624, NR-625, NR-626, NR-627, NR-628, NR-629, NR-630, NR-631, NR-632, NR-633, NR-634, NR-635, NR-636, NR-637, NR-638, NR-639, NR-640, NR-641, NR-642, NR-643, NR-644, NR-645, NR-646, NR-647, NR-648, NR-649, NR

CONCRETO ESTRUTURAL:

- |  |        |
|--|--------|
| 2) RESISTÊNCIA COMPRESSÃO $\geq 25\text{MPa}$        |        |
| 3) ABATIMENTO CONCRETO (SLUMP) = $12 \pm 2\text{cm}$ |        |
| 4) CONSUMO CIMENTO $\geq 400\text{Kg/m}^3$           |        |
| 5) RELAÇÃO AGÜAMENTO $\leq 0,55$                     |        |
| 6) COBRIMENTO MÍNIMO DAS ARMADURAS:                  |        |
| LAJES(1):  |        |
| ARMADURA NEGATIVA                                    | 2,0 cm |
| ARMADURA POSITIVA                                    | 2,0 cm |
| ESCADAS:   |        |
| VIGAS(1):  | 2,0 cm |
| VIGAS DE BALDRAME                                    | 3,0 cm |
| DEMAIS VIGAS   | 2,5 cm |
| BLOCOS/SAPATAS:                                      | 3,0 cm |
| ESTACAS/TUBULÕES:                                    | 4,0 cm |
| CORTINAS/MUROS:                                      | 3,0 cm |
| PLÁREIS:   | 2,5 cm |
| RESERVOATÓRIOS:                                      |        |
| LAJE DA TAMPA  | 4,0 cm |
| PAREDES E LAJE DO FUNDO                              | 3,0 cm |

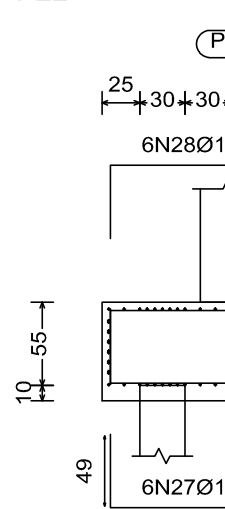
ATENÇÃO:  
DEVE SER ADOTADO CONTROLE RIGOROSO DE QUALIDADE E RÍGIDOS  
LIMITES DE TOLERÂNCIA DA VARIABILIDADE DAS MEDIDAS DURANTE A  
EXECUÇÃO.

OBSERVAÇÃO PROJETO DE FUNDAÇÕES

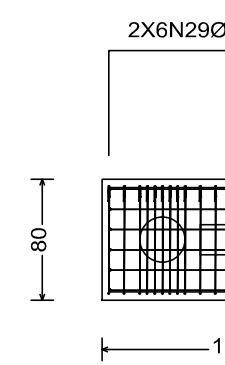
AS FUNDAÇÕES DA QUADRA POLIESPORTIVA DEVERÃO SER EXECUTADAS EM BLOCOS SOBRE ESTACAS. AS ESTACAS FORAM DIMENSIONADAS PARA RESISTÊNCIA CARACTERÍSTICA DE 18 TF. ELAS FORAM PROJETADAS DO TIPO HULCE CONTÍNUA MONITORADA, COM DIÂMETRO NOMINAL DE 30cm E 12m DE PROFUNDIDADE DE ESCAVAÇÃO. O PROJETO DAS ESTACAS SOMENTE SERÁ LIBERADO PARA EXECUÇÃO APÓS REALIZAÇÃO DE TESTE DE CARGA (COM RESPECTIVO LAUDO E ART) E SUA VALIDAÇÃO PELA EQUIPE DE ENGENHARIA DA SEDUC-AT. O PROSSEGUIMENTO DA EXECUÇÃO DA ESTRUTURA DEPENDE LULA E EXCLUSIVAMENTE DA APROVAÇÃO DESTE TESTE DE CARGA DAS ESTACAS.

RESUMO AÇO BLOCO SOBRE ESTACAS									
Elemento	Pos.	Dim.	Q <sub>ob</sub>	Ret <sub>ob</sub>	Q <sub>comp.</sub>	Total	Ca-50	Ca-60	
			(cm)	(cm)			(kg)	(kg)	
P1+P2+P3+P4+P5+P6+P7+P8+P9+P10+P11+P12+P13+P14+P15+P16+P17+P18+P19+P20+P21+P22+P23+P24+P25+P26+P27+P28+P29+P30+P31+P32+P33+P34+P35+P36+P37+P38+P39+P40+P41+P42+P43+P44+P45+P46+P47+P48+P49+P50+P51+P52+P53+P54+P55+P56+P57+P58+P59+P60+P61+P62+P63+P64+P65+P66+P67+P68+P69+P70+P71+P72+P73+P74+P75+P76+P77+P78+P79+P80+P81+P82+P83+P84+P85+P86+P87+P88+P89+P90+P91+P92+P93+P94+P95+P96+P97+P98+P99+P100+P101+P102+P103+P104+P105+P106+P107+P108+P109+P110+P111+P112+P113+P114+P115+P116+P117+P118+P119+P120+P121+P122+P123+P124+P125+P126+P127+P128+P129+P130+P131+P132+P133+P134+P135+P136+P137+P138+P139+P140+P141+P142+P143+P144+P145+P146+P147+P148+P149+P150+P151+P152+P153+P154+P155+P156+P157+P158+P159+P160+P161+P162+P163+P164+P165+P166+P167+P168+P169+P170+P171+P172+P173+P174+P175+P176+P177+P178+P179+P180+P181+P182+P183+P184+P185+P186+P187+P188+P189+P190+P191+P192+P193+P194+P195+P196+P197+P198+P199+P200+P201+P202+P203+P204+P205+P206+P207+P208+P209+P210+P211+P212+P213+P214+P215+P216+P217+P218+P219+P220+P221+P222+P223+P224+P225+P226+P227+P228+P229+P230+P231+P232+P233+P234+P235+P236+P237+P238+P239+P240+P241+P242+P243+P244+P245+P246+P247+P248+P249+P250+P251+P252+P253+P254+P255+P256+P257+P258+P259+P260+P261+P262+P263+P264+P265+P266+P267+P268+P269+P270+P271+P272+P273+P274+P275+P276+P277+P278+P279+P280+P281+P282+P283+P284+P285+P286+P287+P288+P289+P290+P291+P292+P293+P294+P295+P296+P297+P298+P299+P300+P301+P302+P303+P304+P305+P306+P307+P308+P309+P310+P311+P312+P313+P314+P315+P316+P317+P318+P319+P320+P321+P322+P323+P324+P325+P326+P327+P328+P329+P330+P331+P332+P333+P334+P335+P336+P337+P338+P339+P340+P341+P342+P343+P344+P345+P346+P347+P348+P349+P350+P351+P352+P353+P354+P355+P356+P357+P358+P359+P360+P361+P362+P363+P364+P365+P366+P367+P368+P369+P370+P371+P372+P373+P374+P375+P376+P377+P378+P379+P380+P381+P382+P383+P384+P385+P386+P387+P388+P389+P390+P391+P392+P393+P394+P395+P396+P397+P398+P399+P400+P401+P402+P403+P404+P405+P406+P407+P408+P409+P410+P411+P412+P413+P414+P415+P416+P417+P418+P419+P420+P421+P422+P423+P424+P425+P426+P427+P428+P429+P430+P431+P432+P433+P434+P435+P436+P437+P438+P439+P440+P441+P442+P443+P444+P445+P446+P447+P448+P449+P450+P451+P452+P453+P454+P455+P456+P457+P458+P459+P460+P461+P462+P463+P464+P465+P466+P467+P468+P469+P470+P471+P472+P473+P474+P475+P476+P477+P478+P479+P480+P481+P482+P483+P484+P485+P486+P487+P488+P489+P490+P491+P492+P493+P494+P495+P496+P497+P498+P499+P500+P501+P502+P503+P504+P505+P506+P507+P508+P509+P510+P511+P512+P513+P514+P515+P516+P517+P518+P519+P520+P521+P522+P523+P524+P525+P526+P527+P528+P529+P530+P531+P532+P533+P534+P535+P536+P537+P538+P539+P540+P541+P542+P543+P544+P545+P546+P547+P548+P549+P550+P551+P552+P553+P554+P555+P556+P557+P558+P559+P560+P561+P562+P563+P564+P565+P566+P567+P568+P569+P570+P571+P572+P573+P574+P575+P576+P577+P578+P579+P580+P581+P582+P583+P584+P585+P586+P587+P588+P589+P590+P591+P592+P593+P594+P595+P596+P597+P598+P599+P600+P601+P602+P603+P604+P605+P606+P607+P608+P609+P610+P611+P612+P613+P614+P615+P616+P617+P618+P619+P620+P621+P622+P623+P624+P625+P626+P627+P628+P629+P630+P631+P632+P633+P634+P635+P636+P637+P638+P639+P640+P641+P642+P643+P644+P645+P646+P647+P648+P649+P650+P651+P652+P653+P654+P655+P656+P657+P658+P659+P660+P661+P662+P663+P664+P665+P666+P667+P668+P669+P670+P671+P672+P673+P674+P675+P676+P677+P678+P679+P680+P681+P682+P683+P684+P685+P686+P687+P688+P689+P690+P691+P692+P693+P694+P695+P696+P697+P698+P699+P700+P701+P702+P703+P704+P705+P706+P707+P708+P709+P710+P711+P712+P713+P714+P715+P716+P717+P718+P719+P720+P721+P722+P723+P724+P725+P726+P727+P728+P729+P730+P731+P732+P733+P734+P735+P736+P737+P738+P739+P740+P741+P742+P743+P744+P745+P746+P747+P748+P749+P750+P751+P752+P753+P754+P755+P756+P757+P758+P759+P760+P761+P762+P763+P764+P765+P766+P767+P768+P769+P770+P771+P772+P773+P774+P775+P776+P777+P778+P779+P780+P781+P782+P783+P784+P785+P786+P787+P788+P789+P790+P791+P792+P793+P794+P795+P796+P797+P798+P799+P800+P801+P802+P803+P804+P805+P806+P807+P808+P809+P810+P811+P812+P813+P814+P815+P816+P817+P818+P819+P820+P821+P822+P823+P824+P825+P826+P827+P828+P829+P830+P831+P832+P833+P834+P835+P836+P837+P838+P839+P840+P841+P842+P843+P844+P845+P846+P847+P848+P849+P850+P851+P852+P853+P854+P855+P856+P857+P858+P859+P860+P861+P862+P863+P864+P865+P866+P867+P868+P869+P870+P871+P872+P873+P874+P875+P876+P877+P878+P879+P880+P881+P882+P883+P884+P885+P886+P887+P888+P889+P890+P891+P892+P893+P894+P895+P896+P897+P898+P899+P900+P901+P902+P903+P904+P905+P906+P907+P908+P909+P910+P911+P912+P913+P914+P915+P916+P917+P918+P919+P920+P921+P922+P923+P924+P925+P926+P927+P928+P929+P930+P931+P932+P933+P934+P935+P936+P937+P938+P939+P940+P941+P942+P943+P944+P945+P946+P947+P948+P949+P950+P951+P952+P953+P954+P955+P956+P957+P958+P959+P960+P961+P962+P963+P964+P965+P966+P967+P968+P969+P970+P971+P972+P973+P974+P975+P976+P977+P978+P979+P980+P981+P982+P983+P984+P985+P986+P987+P988+P989+P990+P991+P992+P993+P994+P995+P996+P997+P998+P999+P1000+P1001+P1002+P1003+P1004+P1005+P1006+P1007+P1008+P1009+P1010+P1011+P1012+P1013+P1014+P1015+P1016+P1017+P1018+P1019+P1020+P1021+P1022+P1023+P1024+P1025+P1026+P1027+P1028+P1029+P1030+P1031+P1032+P1033+P1034+P1035+P1036+P1037+P1038+P1039+P1040+P1041+P1042+P1043+P1044+P1045+P1046+P1047+P1048+P1049+P1050+P1051+P1052+P1053+P1054+P1055+P1056+P1057+P1058+P1059+P1060+P1061+P1062+P1063+P1064+P1065+P1066+P1067+P1068+P1069+P1070+P1071+P1072+P1073+P1074+P1075+P1076+P1077+P1078+P1079+P1080+P1081+P1082+P1083+P1084+P1085+P1086+P1087+P1088+P1089+P1090+P1091+P1092+P1093+P1094+P1095+P1096+P1097+P1098+P1099+P1100+P1101+P1102+P1103+P1104+P1105+P1106+P1107+P1108+P1109+P1110+P1111+P1112+P1113+P1114+P1115+P1116+P1117+P1118+P1119+P1120+P1121+P1122+P1123+P1124+P1125+P1126+P1127+P1128+P1129+P1130+P1131+P1132+P1133+P1134+P1135+P1136+P1137+P1138+P1139+P1140+P1141+P1142+P1143+P1144+P1145+P1146+P1147+P1148+P1149+P1150+P1151+P1152+P1153+P1154+P1155+P1156+P1157+P1158+P1159+P1160+P1161+P1162+P1163+P1164+P1165+P1166+P1167+P1168+P1169+P1170+P1171+P1172+P1173+P1174+P1175+P1176+P1177+P1178+P1179+P1180+P1181+P1182+P1183+P1184+P1185+P1186+P1187+P1188+P1189+P1190+P1191+P1192+P1193+P1194+P1195+P1196+P1197+P1198+P1199+P1200+P1201+P1202+P1203+P1204+P1205+P1206+P1207+P1208+P1209+P1210+P1211+P1212+P1213+P1214+P1215+P1216+P1217+P1218+P1219+P1220+P1221+P1222+P1223+P1224+P1225+P1226+P1227+P1228+P1229+P1230+P1231+P1232+P1233+P1234+P1235+P1236+P1237+P1238+P1239+P1240+P1241+P1242+P1243+P1244+P1245+P1246+P1247+P1248+P1249+P1250+P1251+P1252+P1253+P1254+P1255+P1256+P1257+P1258+P1259+P1260+P1261+P1262+P1263+P1264+P1265+P1266+P1267+P1268+P1269+P1270+P1271+P1272+P1273+P1274+P1275+P1276+P1277+P1278+P1279+P1280+P1281+P1282+P1283+P1284+P1285+P1286+P1287+P1288+P1289+P1290+P1291+P1292+P1293+P1294+P1295+P1296+P1297+P1298+P1299+P1300+P1301+P1302+P1303+P1304+P1305+P1306+P1307+P1308+P1309+P1310+P1311+P1312+P1313+P1314+P1315+P1316+P1317+P1318+P1319+P1320+P1321+P1322+P1323+P1324+P1325+P1326+P1327+P1328+P1329+P1330+P1331+P1332+P1333+P1334+P1335+P1336+P1337+P1338+P1339+P1340+P1341+P1342+P1343+P1344+P1345+P1346+P1347+P1348+P1349+P1350+P1351+P1352+P1353+P1354+P1355+P1356+P1357+P1358+P1359+P1360+P1361+P1362+P1363+P1364+P1365+P1366+P1367+P1368+P1369+P1370+P1371+P1372+P1373+P1374+P1375+P1376+P1377+P1378+P1379+P1380+P1381+P1382+P1383+P1384+P1385+P1386+P1387+P1388+P1389+P1390+P1391+P1392+P1393+P1394+P1395+P1396+P1397+P1398+P1399+P1400+P1401+P1402+P1403+P1404+P1405+P1406+P1407+P1408+P1409+P1410+P1411+P1412+P1413+P1414+P1415+P1416+P1417+P1418+P1419+P1420+P1421+P1422+P1423+P1424+P1425+P1426+P1427+P1428+P1429+P1430+P1431+P1432+P1433+P1434+P1435+P1436+P1437+P1438+P1439+P1440+P1441+P1442+P1443+P1444+P1445+P1446+P1447+P1448+P1449+P1450+P1451+P1452+P1453+P1454+P1455+P1456+P1457+P1458+P1459+P1460+P1461+P1462+P1463+P1464+P1465+P1466+P1467+P1468+P1469+P1470+P1471+P1472+P1473+P1474+P1475+P1476+P1477+P1478+P1479+P1480+P1481+P1482+P1483+P1484+P1485+P1486+P1487+P1488+P1489+P1490+P1491+P1492+P1493+P1494+P1495+P1496+P1497+P1498+P1499+P1500+P1501+P1502+P1503+P1504+P1505+P1506+P1507+P1508+P1509+P1510+P1511+P1512+P1513+P1514+P1515+P1516+P1517+P1518+P1519+P1520+P1521+P1522+P1523+P1524+P1525+P1526+P1527+P1528+P1529+P1530+P1531+P1532+P1533+P1534+P1535+P1536+P1537+P1538+P1539+P1540+P1541+P1542+P1543+P1544+P1545+P1546+P1547+P1548+P1549+P1550+P1551+P1552+P1553+P1554+P1555+P1556+P1557+P1558+P1559+P1560+P1561+P1562+P1563+P1564+P1565+P1566+P1567+P1568+P1569+P1570+P1571+P1572+P1573+P1574+P1575+P1576+P1577+P1578+P1579+P1580+P1581+P1582+P1583+P1584+P1585+P1586+P1587+P1588+P1589+P1590+P1591+P1592+P1593+P1594+P1595+P1596+P1597+P1598+P1599+P1600+P1601+P1602+P1603+P1604+P1605+P1606+P1607+P1608+P1609+P1610+P1611+P1612+P1613+P1614+P1615+P1616+P1617+P1618+P1619+P1620+P1621+P1622+P1623+P1624+P1625+P1626+P1627+P1628+P1629+P1630+P1631+P1632+P1633+P1634+P1635+P1636+P1637+P1638+P1639+P1640+P1641+P1642+P1643+P1644+P1645+P1646+P1647+P1648+P1649+P1650+P1651+P1652+P1653+P1654+P1655+P1656+P1657+P1658+P1659+P1660+P1661+P1662+P1663+P1664+P1665+P1666+P1667+P1668+P1669+P1670+P1671+P1672+P1673+P1674+P1675+P1676+P1677+P1678+P1679+P1680+P1681+P1682+P1683+P1684+P1685+P1686+P1687+P1688+P1689+P1690+P1691+P1692+P1693+P1694+P1695+P1696+P1697+P1698+P1699+P1700+P1701+P1702+P1703+P1704+P1705+P1706+P1707+P1708+P1709+P1710+P1711+P1712+P1713+P1714+P1715+P1716+P1717+P1718+P1719+P1720+P1721+P1722+P1723+P1724+P1725+P1726+P1727+P1728+P1729+P1730+P1731+P1732+P1733+P1734+P1735+P1736+P1737+P1738+P1739+P1740+P1741+P1742+P1743+P1744+P1745+P1746+P1747+P1748+P1749+P1750+P1751+P1752+P1753+P1754+P1755+P1756+P1757+P1758+P1759+P1760+P1761+P1762+P1763+P1764+P1765+P1766+P1767+P1768+P1769+P1770+P1771+P1772+P1773+P1774+P1775+P1776+P1777+P1778+P1779+P1780+P1781+P1782+P1783+P1784+P1785+P1786+P1787+P1788+P1789+P1790+P1791+P1792+P1793+P1794+P1795+P1796+P1797+P1798+P1799+P1800+P1801+P1802+P1803+P1804+P1805+P1806+P1807+P1808+P1809+P1810+P1811+P1812+P1813+P1814+P1815+P1816+P1817+P1818+P1819+P1820+P1821+P1822+P1823+P1824+P1825+P1826+P1827+P1828+P1829+P1830+P1831+P1832+P1833+P1834+P1835+P1836+P1837+P1838+P1839+P1840+P1841+P1842+P1843+P1844+P1845+P1846+P1847+P1848+P1849+P1850+P1851+P1852+P1853+P1854+P1855+P1856+P1857+P1858+P1859+P1860+P1861+P1862+P1863+P1864+P1865+P1866+P1867+P1868+P1869+P1870+P1871+P1872+P1873+P1874+P1875+P1876+P1877+P1878+P1879+P1880+P1881+P1882+P1883+P1884+P1885+P1886+P1887+P1888+P1889+P1890+P1891+P1892+P1893+P1894+P1895+P1896+P1897+P1898+P1899+P1900+P1901+P1902+P1903+P1904+P1905+P1906+P1907+P1908+P1909+P1910+P1911+P1912+P1913+P1914+P1915+P1916+P1917+P1918+P1919+P1920+P1921+P1922+P1923+P1924+P1925+P1926+P1927+P1928+P1929+P1930+P1931+P1932+P1933+P1934+P1935+P1936+P1937+P1938+P1939+P1940+P1941+P1942+P1943+P1944+P1945+P1946+P1947+P1948+P1949+P1950+P1951+P1952+P1953+P1954+P1955+P1956+P1957+P1958+P1959+P1960+P1961+P1962+P1963+P1964+P1965+P1966+P1967+P1968+P1969+P1970+P1971+P1972+P1973+P1974+P1975+P1976+P1977+P1978+P1979+P1980+P1981+P1982+P1983+P1984+P1985+P1986+P1987+P1988+P1989+P1990+P1991+P1992+P1993+P1994+P1995+P1996+P1997+P1998+P1999+P2000+P2001+P2002+P2003+P2004+P2005+P2006+P2007+P2008+P2009+P2010+P2011+P2012+P2013+P2014+P2015+P2016+P2017+P2018+P2019+P2020+P2021+P2022+P2023+P2024+P2025+P2026+P2027+P2028+P2029+P2030+P2031+P2032+P2033+P2034+P2035+P2036+P2037+P2038+P2039+P2040+P2041+P2042+P2043+P2044+P2045+P2046+P2047+P2048+P2049+P2050+P2051+P2052+P2053+P2054+P2055+P2056+P2057+P2058+P2059+P2060+P2061+P2062+P2063+P2064+P2065+P2066+P2067+P2068+P2069+P2070+P2071+P2072+P2073+P2074+P2075+P2076+P2077+P2078+P2079+P2080+P2081+P2082+P2083+P2084+P2085+P2086+P2087+P2088+P2089+P2090+P2091+P2092+P2093+P2094+P2095+P2096+P2097+P2098+P2099+P2100+P2101+P2102+P2103+P2104+P2105+P2106+P2107+P2108+P2109+P2110+P2111+P2112+P2113+P2114+P2115+P2116+P2117+P2118+P2119+P2120+P2121+P2122+P2123+P2124+P2125+P2126+P2127+P2128+P2129+P2130+P2131+P2132+P2133+P2134+P2135+P2136+P2137+P2138+P2139+P2140+P2141+P2142+P2143+P2144+P2145+P2146+P2147+P2148+P2149+P2150+P2151+P2152+P2153+P2154+P2155+P2156+P2157+P2158+P2159+P2160+P2161+P2162+P2163+P2164+P2165+P2166+P2167+P2168+P2169+P2170+P2171+P2172+P2173+P2174+P2175+P2176+P2177+P2178+P2179+P2180+P2181+P2182+P2183+P2184+P2185+P2186+P2187+P2188+P2189+P2190+P2191+P2192+P2193+P2194+P2195+P2196+P2197+P2198+P2199+P2200+P2201+P2202+P2203+P2204+P2205+P2206+P2207+P2208+P2209+P2210+P2211+P2212+P2213+P2214+P2215+P2216+P2217+P2218+P2219+P2220+									

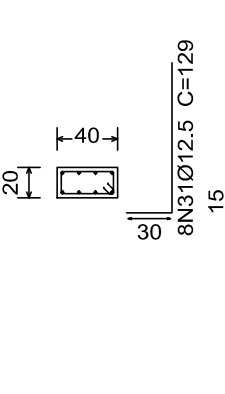
P22




Estacas: EST 3M



P22



MEMORIA DE OBRAS  MUNICÍPIO DE SÃO MATEUS SECRETARIA DE EDUCAÇÃO	Estado de Mato Grosso - MT Secretaria de Estado de Educação, Esporte e Lazer- SEDUC Secretaria Adjunta de Obras Escolares - SAOB
TIPO DA OBRA:	INSTITUCIONAL - CONSTRUÇÃO ESCOLA ESTADUAL PARQUE SABIA
PROPRIETARIO CPF OU CGC:	SECRETARIA DE ESTADO DE EDUCAÇÃO, ESPORTE E LAZER
LOCAL E INSCRIÇÃO CADASTRAL:	RUA JUSCELINO KUBITSCHKE - S/Nº PARQUE SABIA (SÃO MATEUS) - VÁRZEA GRANDE - MT INSCRIÇÃO CADASTRAL
ELABORADO POR:	Joshua Testoni! Engenheiro Civil - SAOB / SEDUC CREA-SC 134578-7
APROVADO POR:	
ESCALA: 1:50000 DATA: 10/01 / 2017 DESENHO: Engº Civil Joshua Testoni	ALÍQUOTA PROJETO ESTRUTURAL - REFEITÓRIO PLANTA DE LOCAÇÃO DE PILARES E FUNDAÇÕES
E S T A B I L I Z A Ç Ã O	
TERREIRO	DEMAS PAV
CÓD. APROVED.	Nº DE PROJ.
01/11	
01	